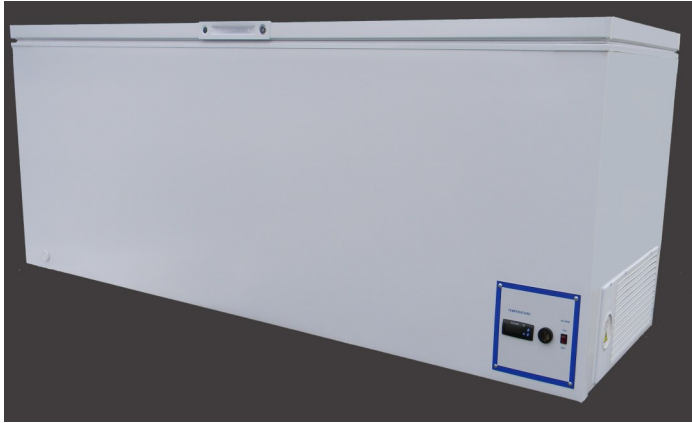


Model 34-20 Chest Freezer



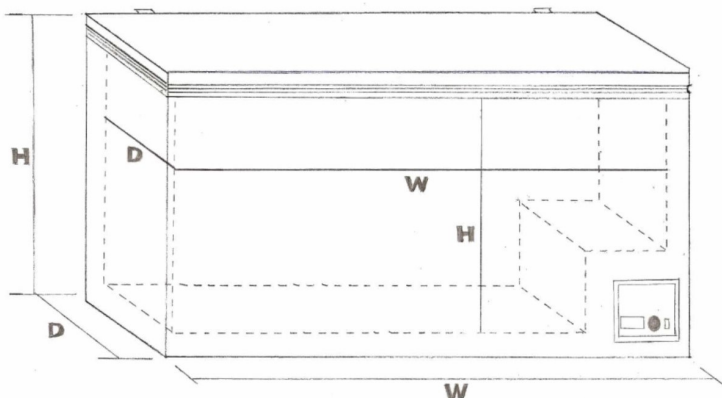
Standard 20 cu. ft. Freezer

Exterior Dimensions	34"H x 73-5/8"W x 29-5/8"D
Interior Dimensions	24-1/2"H x 67-1/4"W x 21-7/16"D
Temperature Range	0 C /32F to -34 /-30F
Capacity	20 cubic foot
Insulation	Urethane
Door	Key Locking
Casters	2 Locking and 4 Non-Locking
Temperature Controller	Digital Display
Alarm (No Battery Backup)	Audible Only

Note: Exterior height includes casters.
Depth measurement includes handle and hinges.

Refrigeration

Compressor - High stage	1/8 hp
Compressor	(Not Applicable)
Refrigerant	R-404A
Voltage	115/60/1 230/60/1 230/50/1
Refrigerant Control	Capillary Tube
Evaporator	Cold Wall
Defrost	Manual
Condenser	Shell
Running Amps	7 amps (115v) 3.5 amps (230v)



Safe, Economical & Easy Access

Freezers are manufactured using environmentally safe urethane foam insulation. Key-Locking counterbalanced lid with non-magnetic gasket.

CFC Free

All products are manufactured using CFC free, non-toxic, non-combustible and non-ozone depleting refrigerant. Compressors are permanently lubricated and hermetically sealed.

Sturdy Construction

Outer cabinet is made of welded steel with high-impact textured powder coat finish. Inner compartment is made of welded steel, epoxy enamel finish.

Temperature Display / Alarm

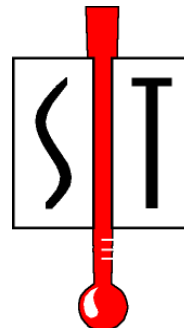
Digital readout displays internal temperature in either Degrees Centigrade or Fahrenheit. An audible alarm sounds to alert personnel of a rise in internal temperature.
(No Battery Backup)



Accessories and Upgrades

- Cyro-Gloves
- CAL9500 Temperature Controller for Ramp/Soak Control
- CALgrafix Software (only available with upgrade to CAL9500 Controller)
- 6" Chart Recorder
- Automatic Voice Pager Dialer
- Explosion Proofing

Note: Some items listed in the accessories and upgrades will require an end rack to be added to freezer.



ScienTemp™

3565 S. Adrian Hwy

Adrian, MI 49221

Ph. 517-263-6020 / Fax 517-263-5492

Toll Free 1-800-968-2653

Website: www.scientemp.com

