

## HEALTHCARE LINE

# 3870HSG-WS

HSG Pre & Post Vacuum  
Medium Size Autoclave



Economic Line

# Medical Center Autoclaves

## Hospital Grade Performance for OR and Large Clinics

The 3870HSG-WS autoclave is an 85 liter autoclave that is ideal for medical centers and large clinics. The 3870HSG-WS autoclave provides hospital grade sterilization and medium loading capacity at a cost-effective price that meets the highest international standards.

Tuttnauer has manufactured infection control products for over 95 years that have developed a reputation for the quality, high performance, sophisticated features, and the ability to satisfy customers' expectations. Tuttnauer's sterilization and infection control products are trusted at over 350 000 autoclave installations throughout the world.



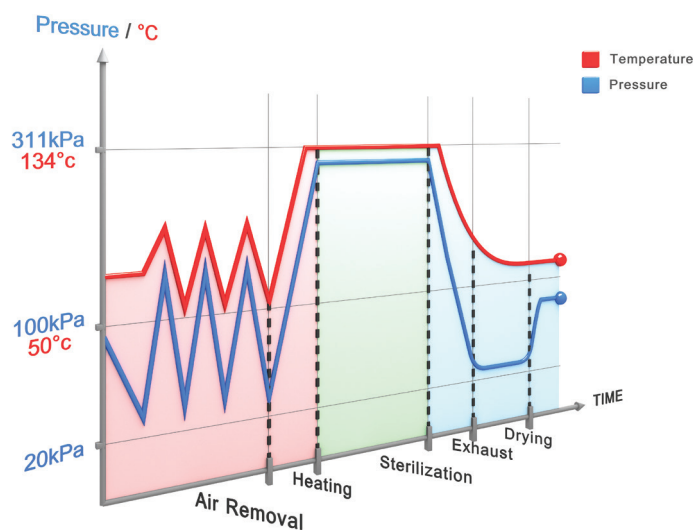
► **COMPACT**

► **GREEN**

► **PLUG & PLAY**

► **EASY TO MOVE - EASY TO INSTALL**

► **COST-EFFECTIVE PRICING**



### Pre & Post Vacuum Performance

Pre & Post vacuum performance is achieved with a built-in vacuum pump used for fractionated pre vacuum air removal eliminating air pockets from all load types and maximizing efficient steam penetration throughout the entire load. After the sterilization stage the vacuum pump is used for post-vacuum drying.



## COMPACT

Narrow Design - fits through standard doorways  
 Minimal Footprint - high capacity autoclave which does not require a lot of space



## GREEN

Water Saving System – uses only 5 liters of tap water a day  
 Sleep Mode - Control system switches off while not in use. The generator remains active 24 hours per day!  
 Low Rate Cycle - you can run your sterilizer when electrical power costs are low, like after work hours, by setting a delayed start time



## PLUG & PLAY

Independent Mode - no need to connect the autoclave to the building utilities for distilled water, tap water and drain (optional - WS model)



## EASY TO MOVE - EASY TO INSTALL

Mobility – easy to move autoclave to new locations due to built-in swivel wheels  
 Installation Made Easy – connect to utilities with flexible piping  
 Adjustable Floor Layout – due to mobility and easy installation medical centers can easily adjust floor layout



## COST EFFECTIVE PRICING

Efficient Chamber Design – rounded chamber allows for economic pricing without compromising sterilization performance



## Mini CSSD for Operating Rooms



(A) Washer Disinfector, (B) 5075HSG, (C) 3870HSG, (D) Steri-Center Packing Table



# Innovative Control System



## Dynamic Multi-Color Display

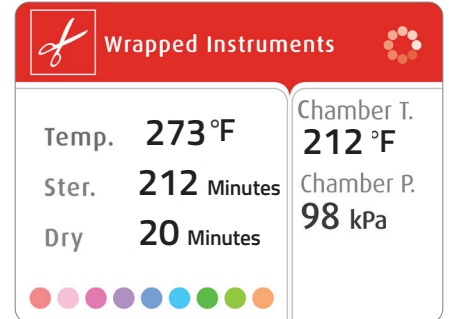
A bright multicolor LCD panel for easy reading, even from a distance.

- Wheel rotates to indicate an active cycle
- Time remaining during Water Filling, Sterilization, and Drying stages is updated in real-time
- Multilingual interface (26 languages)

**Sterilization**



**Exhaust**



## Digital Data on Your PC

Save cycle data files on your PC with no additional software or specialized hardware



Connect USB memory



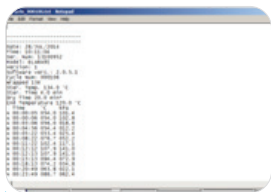
Select "Export History"



Connect USB memory to your PC

**Built-in Printer**

Documents detailed history of each cycle



View Cycle Data Files on Your PC



## R.PC.R Software

Automatic Recording of Cycle Information to Your PC

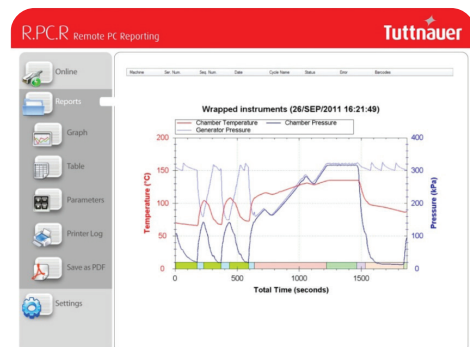
Reporting You Can Rely On

- Automatic cycle data recording to any PC on your network
- Convenient access to graphs & tables
- Easily generate PDF reports
- No need to file printouts, saving you time

Be in Control with Real-Time Remote Monitoring

- See the real-time autoclave display on your PC
- Monitor all activity for up to 8 autoclaves

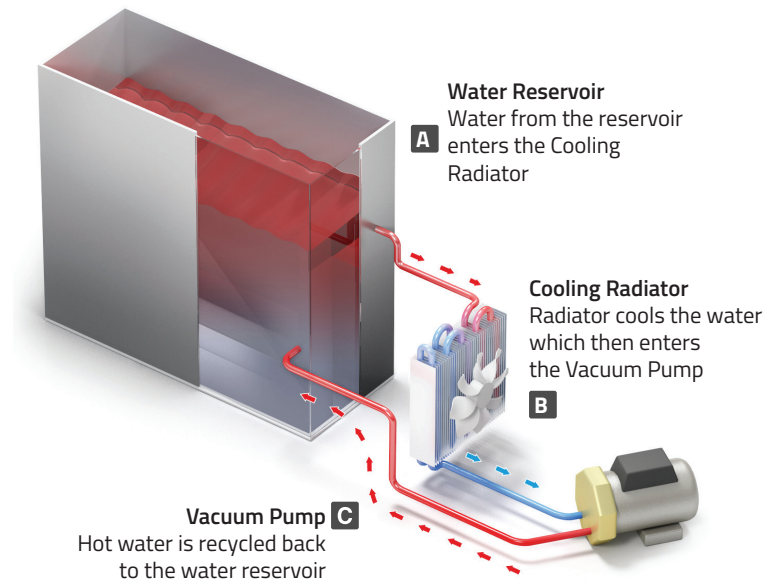
R.PC.R Software is optional.



**With R.PC.R you can see:** Graphs of the cycle data, numeric cycle data, cycle print-outs, measured values table, table of parameters.

## Water Saving System

Huge water savings are achieved with the optional highly efficient water recycling system (HSG-WS model) that consumes only 5 liters of tap water per day.



## Utility Connection Features

### Dependent on Utilities

The HSG can be operated as a stationary sterilizer connected to building utilities for distilled water, tap water, drain and electricity.

### Independent of Utilities

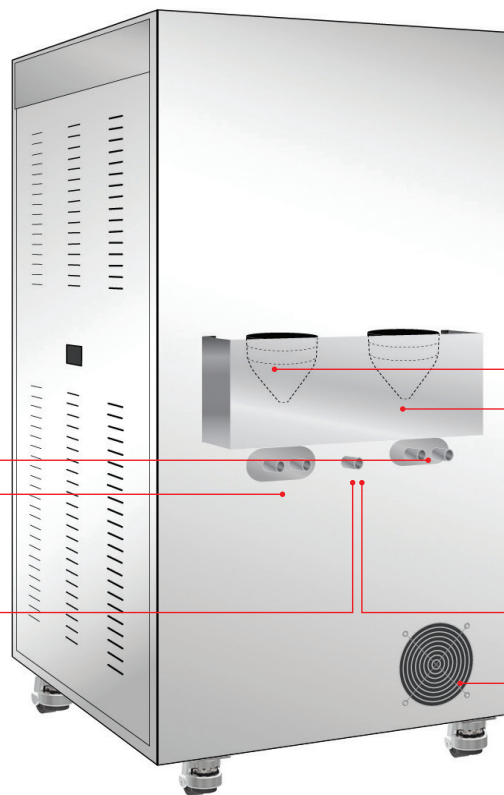
The HSG-WS comes with a standard "Plug and Play" option to operate only with an electric power connection. In this mode there is no need to connect the autoclave to the building utilities for distilled water, tap water and drain. With this option it is also possible to connect to utilities.

### Dependent on Utilities

- ↑ Connection to tap water supply
- ↑ Connection to demineralized water supply
- ↑ Drain connection to building drain

### Independent of Utilities

- ↑ Tap water reservoir funnel
- ↑ Demineralized water reservoir funnel
- ↑ Tap for manual draining
- ↑ Water saving system radiator



(Back of autoclave)

## Safe & Reliable

- Double locking safety device prevents door from opening while chamber is pressurized
- Control lock-out switch prevents starting a cycle if door is not properly locked
- Control system protection prevents door from opening at high pressure and temperature

## 3870HSG-WS - 85 Liter Chamber

The 3870 HSG-WS is a hospital grade Class B autoclave, suitable for large medical & dental clinics, and operating rooms. Designed to be a fast cycle sterilizer that is mobile, operates 24 hours a day, and can optionally operate independent of building utilities.

- Automatic locking door
- Powerful built-in steam generator
- 316L Chamber & trays



3870HSG-WS Dimensions



### Technical Specifications

Model	Chamber Dim. $\phi$ x L (In.)	Chamber Vol. (Liters)	No. of Trays	Tray Dimensions W x H x D (In.)	Overall Dimensions W x H x D (In.)	Autoclave Weight (lbs.)
3870 HSG-WS	15.2" x 29.9"	85L	2	Small: 11.3"x 1"x26.6" Large: 13.8"x 1"x 26.6"	28.4" x 53.8" x 46.5"	397 lbs.

## Complies with the Strictest International Directives and Standards

### Quality Standards

- ISO 9001:2015 - Quality Management Systems
- EN ISO 13485:2016 Quality Management System – Medical Devices
- In compliance with 21 CFR part 820 & part 11

### Directives

- MDD 93/42/EEC amended in Directive 2007/47/EEC
- PED 2014/68/EU - Pressure Equipment Directive
- 2012/19/EU WEEE and 2017/2102 RoHS

### Technical Standards

- EN 285: 2015 Large steam sterilizer
- EN 61010-1: 2010
- EN 61326-1: 2013
- EN 61010-2-40: 2015
- FDA Approved
- ANSI/AAMI/ST8:2013 (R2018)
- ANSI/AAMI - ST55:2016
- ASME Code section I and section VIII. Div.I

## Electrical Specifications

Model	Voltage (Volts) / Frequency (Hz)	Power (kW)
3870HSG – WS	1 ph, 230 Volts (requires switch box - optional)	9 kW

## Your Sterilization & Infection Control Partners

For over 95 years, Tuttnauer's sterilization and infection control products have been trusted by hospitals, universities, research institutes, clinics and laboratories throughout the world. Supplying a range of top-quality products to over 140 countries, Tuttnauer has earned global recognition as a leader in sterilization and infection control.





# Supporting products

## A Complete Infection Control Solution

Based on our decades of infection control knowledge and experience, Tuttnauer delivers a comprehensive range of accessories and consumables for precise monitoring and control of hygiene, cleaning, disinfecting, processing and sterilization. Delivering high quality, reliable and easy to use range of products.

### Biological Indicator Line

Tuttnauer delivers highly reliable indicators for the routine monitoring of sterilization processes to ensure the elimination of highly resistant bacteria on reusable tools and instruments.

#### For Steam Autoclaves



Rapid & Ultra Rapid Indicators  
WTL198-0058  
WTL198-0072



Chemical Indicators Integrator, Type 5  
WTL198-0082



Process indicators Self-adhesive tape  
WTL198-0053



MiniBio Auto-Reader Incubator  
WTL198-0057



Bionova Auto-Reader Incubator  
WTL198-0079



Process Challenge Device  
20 Minute & 1 Hour  
WTL198-0075  
WTL198-0077



Chemical Indicator Multi Variable, Type 4  
WTL198-0081



Learn from our experts.  
Visit our blog: [tuttnauer.com/us/blog](https://www.tuttnauer.com/us/blog)

Tuttnauer USA Co. Ltd.  
25 Power Drive, Hauppauge, NY 11788  
Tel: +800 624 5836, +631 737 4850, Fax: +631 737 0720  
E-mail: [info@tuttnauerUSA.com](mailto:info@tuttnauerUSA.com), [www.tuttnauer.com/us](http://www.tuttnauer.com/us)

